

RF Switching System 3-3000 MHz

**Product Description**

This system provides a switching matrix capable of interfacing 11 sources (transmitters) to 11 loads (antennas or dummy loads). The front panel is fitted with a touch-screen controller which provides a quick overview of the switch status and configuration. Remote control of the interface needs a PC/laptop with internet connection.

Although the switch matrix has been designed for mounting in a standard 19 inch rack, the system can also be supplied pre-installed in an aluminium frame.

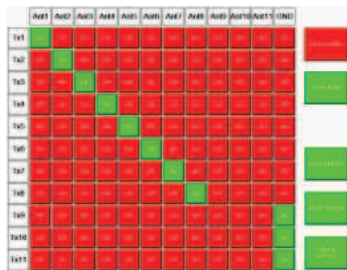
Three models: 3-30MHz, 30-400MHz and 400-3000MHz.

**Features**

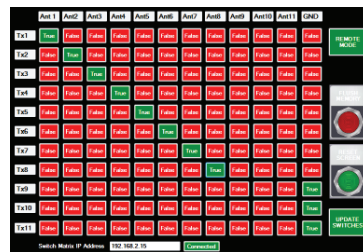
- Reliable, field-proven touch-screen controller.
- Transmitter interlock control by key switches
- Remote control via LAN / WAN.
- Motorised switch actuation



Typical Switch Matrix front



Integrated Touch Screen



Remote Control Interface



Typical Switch Matrix rear

**Specifications**

		3-30 MHz	30-400 MHz	400-3000MHz
Frequency Range	MHz	3-30	30-400	400-3000
Power Rating	kW	2	0.5	0.2
Power Requirement		230VAC±6%, 50Hz, 150W Nominal		
Remote Interface		Ethernet		
Impedance (Input and Output)	Ohm	50		
Isolation	dB	>70	>50	>50
VSWR		<1.1	<1.2	<1.7
Insertion Loss	dB	<0.2	<0.6	<2.0
Switching cycle	sec	11 (no disturbance to channels which are not involved in switching)		
RF Connector Type		N(F)		
Peak Voltage Rating, kV	kV	1.5		
Mounting		19 inch rack		
Operating Temperature, °C (F°)		0 to +45 (32 to 113)		
Storage Temperature, °C (F°)		-20 to +60 (-4 to 140)		
Humidity		0-90% Non-condensing		
Protection		IP20		
Size (W x H x D), mm		482 x 710 x 650 (18 31/32" x 27 61/64" x 25 19/32")		
Weight, kg (lb)		74 (163)		

**Note:** Power ratings are valid to 1500m (5000ft). Please consult RFS for power ratings at higher altitudes.

All information contained in the present brochure is subject to confirmation at time of ordering